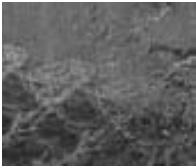


FLASHING

PVC FLASHING

(MOISTSEAL) PVC FLASHING

Advanced Flashings



Moistseal is a polyvinyl chloride sheet available in 10, 20, 30 and 60 mils. Recommended for concealed applications only, Moistseal is an excellent waterproofing membrane. It will show no cracking or flaking when bent through 180 degrees over a 1/32" mandrel and then bent at the same point over the same size mandrel in the opposite direction through 360 degrees. The material conforms to A.S.T.M. Standards D-822 for at least 400 hours. Strict quality control assures full weight and uniform thickness.

ITEM	# 766100	5'X150' 20 MIL
	# 766105	16" X 150' 20 MIL
	# 766150	5' X 150' 30 MIL

BITUMINOUS FLASHING

PERMA-BARRIER WALL FLASHING

PERM-A-BARRIER®

W.R. Grace

Self-adhesive, rubberized asphalt/polyethylene flashing tapes for cavity wall applications; Perm-A-Barrier® wall membranes are ideal for protecting the building superstructure from the damaging effects of the elements. By minimizing air and water vapor flow through the building exterior, Perm-A-Barrier wall membranes: Prevent premature deterioration of the building envelope; Enhance thermal performance of the structure and save energy costs; Improve comfort for the building occupants. Perm-A-Barrier Wall Flashing—1 mm (40 mil.) total thickness self-adhesive, cold applied tape consisting of 0.8 mm (32 mils.) of rubberized asphalt integrally bonded to a 0.2 mm (8 mil.) high density, cross laminated polyethylene film.

ITEM	# 717453	12" X 75' ROLL
	# 717455	18" X 75' ROLL
	# 717458	24" X 75' ROLL
	# 717460	36" X 75' ROLL

VYCOR PLUS SELF-ADHERED FLASHING

W.R. Grace

Vycor Plus self-adhered flashing is composed of two waterproofing materials—rubberized asphalt and cross-laminated polyethylene. It is available in a range of widths: 100 mm (4 in.), 150 mm (6 in.), 225 mm (9 in.), and 300 mm (12 in.) to accommodate a variety of job requirements.

ITEM	# 717459	4" X 75' ROLL
------	----------	---------------

Omaha, NE (800) 383-1272 • Rockford, IL (800) 383-3808
Rock Island, IL (800) 383-1240 • Waterloo, IA (800) 383-2959

GRACE VYCOR PLUS
Self-Adhered Flashing

THERMAL/WATERPROOFING/ DOORS

www.stetsonbuildingproducts.com



SANDO-SEAL

Sandell Manufacturing

Sandell's Sando-Seal is a fully adhered, self-adhering, in wall flashing membrane for use with concrete masonry, gypsum or wood wall construction. Sandell's Sando Seal is a 40mil membrane that is composed of a highly adhesive rubberized asphalt compound. This product is integrally bonded to a high density, cross-laminated polyethylene film. Joined together these materials provide strong and flexible waterproofing layers that insure moisture protection.

ITEM # 761307 18" X 75' ROLL

761309 12" X 75' ROLL

METAL FLASHINGS

3 oz. COP-R-KRAFT/TEX DUPLEX FLASHING

Advanced Flashing

A full copper sheet weighing 1, 2, 3 or 5 oz. per square foot bonded between two layers of waterproofed, creped kraft paper with a plasticized asphalt compound. The 3 and 5 oz. weights are reinforced with glass fibers to meet GSA, FHA and Corps of Engineers specifications. This strong but flexible masonry flashing will give you economical and permanent moisture protection.

ITEM # 761306 3' X 60' ROLL

INSULATION

EXPANDED POLYSTYRENE

POLYSTYRENE (Bead Board)

MEPS is a closed-cell material that can be molded into many everyday items, such as coffee cups and shipping materials, or into large sheets as construction insulation. This material is commonly known as "beadboard," and it has an R-value of about 4 per inch of thickness [2.54 cm]. The physical properties of MEPS vary with the type of bead used, but the density of the board is usually one pound per cubic foot (16.3 kilograms per cubic meter.)

PLEASE CALL FOR DETAILS.

VARIETY OF BOARD SIZES AND THICKNESSES ARE AVAILABLE. 3/4", 1", 1 1/2"L, 2", 2 1/2" AVAILABLE IN 4' X 8' SHEETS AND 2' X 8' SHEETS

Cedar Rapids, IA (800) 383-7272 • Des Moines, IA (800) 383-2181
Dubuque, IA (800) 894-6272 • Grand Island, NE (800) 228-8572