

## ROOFING PAVERS



### **DIAMOND SURFACE PLAZA PAVER 2"X2'X2'**

Westile Roofing Products

Used for walkways in a single ply roofing system.

ITEM # 751279



### **WESTILE BALLAST CONCRETE PAVER 11-3/4"X16-1/2"**

Westile Roofing Products

Used for walkways in a ballast roofing system.

ITEM # 751282

## MEMBRANE FASTENERS

### **FLAT METAL TERMINATION BAR #TB125 1"X10' (NO CAULK LIP)**

Genflex

GenFlex Termination Bar is an aluminum bar that is used to keep water from entering the roofing system at parapet walls and other termination points. Please refer to current GenFlex specifications and details for specific applications.

ITEM # 757104



### **METAL ANCHOR BAR 1" X 10'**

Genflex

GenFlex Metal Anchor Bars are to be used for the mechanical attachment of the membrane at the perimeter of the building, around the certain penetrations, and for all mechanically attached GenFlex roofing systems.

ITEM # 757105

### **METAL TERMINATION BAR 1" X 10' #TB100**

Genflex

GenFlex Termination Bar is an aluminum bar that is used to keep water from entering the roofing system at parapet walls and other termination points. Please refer to current GenFlex specifications and details for specific applications.

ITEM # 757106

# ROOFING PRODUCTS

[www.stetsonbuildingproducts.com](http://www.stetsonbuildingproducts.com)



## **RD-100 DRAIN BAR 3 1/2" X 10' (BALLAST BAR)**

Tru-Fast Corporation

For use with ballasted or non-ballasted systems. Specially extruded without sharp edges.

ITEM # 757107



## **#15 ROOFG RIP FASTENER (1000/BX)**

Genflex

GenFast Fasteners may be used in any GenFlex system for attachment of roofing insulation (using GenFlex insulation plates), and attachment of GenFlex Bar Anchors, GenFlex Seam Plates, GenFlex Termination Bars, GenFlex Termination Rings, and other accessories to steel, wood, and lightweight concrete (into steel deck) substrates. GenFlex GenFast #14 Fasteners are available in various lengths from 31.8 mm to 355.6 mm (1 1/4" to 14"). GenFlex GenFast Fasteners are manufactured to conform to the physical property requirements of Factory Mutual Specification #4470.

AVAILABLE IN A VARIETY OF LENGTHS.



## **GENFAST #14 FASTENER (1000/BX)**

Genflex

GenFast Fasteners may be used in any GenFlex system for attachment of roofing insulation (using GenFlex insulation plates), and attachment of GenFlex Bar Anchors, GenFlex Seam Plates, GenFlex Termination Bars, GenFlex Termination Rings, and other accessories to steel, wood, and lightweight concrete (into steel deck) substrates. GenFlex GenFast #14 Fasteners are available in various lengths from 31.8 mm to 355.6 mm (1 1/4" to 14"). GenFlex GenFast Fasteners are manufactured to conform to the physical property requirements of Factory Mutual Specification #4470.

AVAILABLE IN A VARIETY OF LENGTHS.

Cedar Rapids, IA (800) 383-7272 • Des Moines, IA (800) 383-2181  
Dubuque, IA (800) 894-6272 • Grand Island, NE (800) 228-8572

**CD-10 CONCRETE FASTENER SPIKE (500/BX)**

Genflex

GenFlex GenFast CD-10 Concrete Fasteners is a hammer-in, non-threaded fastener designed to secure insulation and membranes to structural concrete. GenFast Concrete fasteners may be used in any GenFlex system for attachment of roofing insulation (using GenFlex Insulation Plates), and attachment of GenFlex Bar Anchors, GenFlex Seam Plates, GenFlex Termination Bars, GenFlex Termination Rings, and other accessories to structural concrete. GenFlex GenFast CD-10 Fasteners are available in various lengths from 51 mm (2") to 305 mm (12"). GenFlex GenFast CD -10 Fasteners are manufactured to conform to the physical property requirements of Factory Mutual Specification #4470.

**AVAILABLE IN A VARIETY OF LENGTHS.**

**GENFAST ASAP PRE-ASSEMBLED #15 XHD SCREW & PLATE (250/BX)**

Genflex

GenFlex GenFast #15 Preassembled fasteners and seam plates may be used in place of loose GenFast #15 Fasteners and Seam Plates(tm). GenFast #15 Preassembled fasteners and seam plates are to be used for the attachment of GenFlex TPO or RM membranes to Steel or Wood substrates. GenFlex GenFast #15 Preassembled fasteners and seam plates are available in various lengths from 51 mm to 305 mm (2" to 12"). GenFlex GenFast #15 Preassembled fasteners and seam plates are manufactured to conform to the physical property requirements of Factory Mutual Specification #4470.

**AVAILABLE IN A VARIETY OF LENGTHS.**

**1 1/4" X 1/4" GENFAST ZINC MASONRY ANCHOR #OL9189 1000/BX**

Genflex

GenFlex GenFast Zinc Masonry Fasteners are designed to attach termination bar to concrete or masonry walls. GenFlex GenFast Zinc Masonry Fasteners have a one piece expansion body and drive pin.

**ITEM # 757210**



## **DEKFAST #12 PHILLIPS (1000/BX)**

SFS Intec

Available pre-assembled and loose for insulation attachment to steel and wood.

Materials:

- Steel thickness from 22 ga (.028 in.) through 18 ga (.045 in.): Min penetration: 3/4"
- Wood 2x (1-1/2" thick): Min penetration: 1"
- Plywood: Min thickness: 3/4" FR treated; min through penetration: 1/4"

Use with:

- Dekfast 3" round metal plates and 2-7/8" hex metal plates
- Dekfast 3" round plastic Dekflat plates

**AVAILABLE IN A VARIETY OF LENGTHS**



## **DEKFAST #15 PHILLIPS HS 15 X 4" #C2030-932P (1000/BX)**

SFS Intec

Insulation board to roof deck

Materials:

- Steel thickness from 26 ga (.019 in.) through 18 ga (.045 in.): Min penetration: 3/4"
- Plywood: Min thickness 3/4" FR treated; min through penetration: 1/4"
- Wood 2x (1-1/2" thick): Min penetration: 1"
- Structural concrete: Min penetration: 1"

Use with:

- Dekfast 2-7/8" hex plates
- Dekfast 3" round plastic Dekflat plates
- 3" round metal plates
- Batten Bar
- Steel membrane plates
- Other attachment elements approved by the roofing system manufacturer for use with their products

**ITEM # 757834**

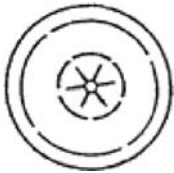
## INSULATION FASTENERS

### **GENFAST LITE-DECK FASTENER (125/BOX)**

Genflex

GenFlex GenFast Lite-Deck Fasteners are specifically designed to be used in roofing applications for the attachment of insulation to cementitious wood fiber (i.e. Tectum), gypsum, or lightweight concrete decks. Available in various lengths.

ITEM	# 757218	9"	#55229
	# 757219	10"	#55230
	# 757220	12"	#55231



### **WASHERS SELF-LOCKING R-150-12 #2230-0150-1\*(1000/BX\*9#\*12GA)**

Gemco

1 1/2", .016 thick, 12 gauge, mild steel, galvanized plating, beveled edge.

ITEM # 791215

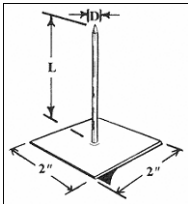
### **PEEL & PRESS INSULATION HANGERS (1000/BX)**

Gemco

NAIL: Low Carbon Steel, copper coated. (Aluminum and Stainless Steel nails available on special order.)

- ANNEALING: All steel pins are fully annealed unless otherwise specified.
- BASEPLATE: Low Carbon Steel, galvanized.

ITEM	# 791216	1 5/8"
	# 791217	2"
	# 791219	2 1/2"



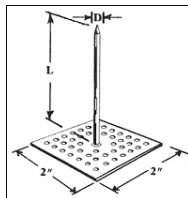
### **1 5/8" PERFORATED INSULATION HANGERS #0912-0162-4 (1000 BX)**

Gemco

NAIL: Low Carbon Steel, copper coated. (Aluminum and Stainless Steel nails available on special order.)

- ANNEALING: All steel pins are fully annealed unless otherwise specified.
- BASEPLATE: Low Carbon Steel, galvanized.

ITEM # 791218



## PLATES

### **2 3/8" BARBED METAL PLATE G6236B (1000/BX)**

Genflex

GenFlex GenFast 3" (76 mm) MAX Barbed Seam Plate is a round, metal, barbed seam plate to be used with the GenFast #16 MAX Fastener. The barbs are unique grips that hold the membrane with minimal tearing. GenFast 3" (76 mm) MAX Barbed Seam Plate has an extruded center hole for increased pull through resistance.

GenFlex GenFast 3" (76 mm) MAX Seam Plates may be used to secure GenFlex TPO membrane to the roof deck in GenFlex TPO. Please refer to current GenFlex TPO specifications and details for specific applications.

ITEM # 757299



### **2" ROUND SEAM PLATES #052690 1000/BX**

Genflex

GenFlex 51 mm (2") Seam Plates are a galvanized metal disc that is used to secure GenFlex TPO membranes to the roof deck in GenFlex TPO Mechanically Attached Systems. Please refer to current GenFlex TPO specifications and details for specific applications.

ITEM # 757300

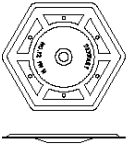


### **3" INSULATION PLATES (1000/BX) #51001**

Genflex

GenFlex GenFast Insulation Plates are used for the attachment of insulation as specified in current GenFlex specifications and details. GenFast Insulation Plates are available either flat or with a recessed area for the fastener head. The recessed plates are for use on softer insulations like polyisocyanurate and wood fiberboard. The flat plates are for use with more dense materials like gypsum board and OSB.

ITEM # 757302



### **DEKFAST INSULATION PLATES 2 7/8" HEX RECESS GALV 1000/BX**

SFS Intec

Recessed Galvalume Steel Hex Insulation Plate

Plate hub is recessed to provide a low profile when used with 1/4" hex head fastener.

Use with:

- #12 Dekfast hex washer head

ITEM # 757820

## MISC ROOFING ITEMS

### **SNOW SHOE KIT CLEAR (LARGE)**

Chemlink

ITEM # 792804

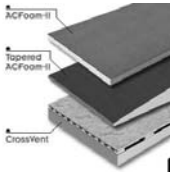
## POLYISOCYANURATE

### **POLY ISO**

Rigid roof insulation panel composed of a closed cell polyisocyanurate foam core. Bonded on each side to fiber reinforced facers.

AVAILABLE IN A VARIETY OF SIZES.

MANUFACTURES: ATLAS/HUNTER/GENFLEX/FIRESTONE



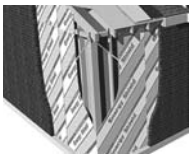
### **ENERGY SHIELD**

Atlas Energy Product

Foil Faced Polyisocyanurate

ITEM # 724049 1 1/2" X 4' X 8'

# 724050 2" X 4' X 8'



### **POLY-ISO TAPERED PANELS**

Tapered Polyisocyanurate panel with a built in slope for water drainage purposes.

AVAILABLE IN A VARIETY OF SIZES.

1/8", 1/4", 1/2" SLOPES AVAILABLE

MANUFACTURES: ATLAS/HUNTER/GENFLEX/FIRESTONE

