



CORNER EDGER STAINLESS STEEL

Wind-Lock

ITEM # 319516	TE1 1" (OUTSIDE)
# 319518	TE2 2" (OUTSIDE)
# 319528	TE15 1-1/2" (OUTSIDE)
# 319532	TE115 1 1/2" (INSIDE)
# 319526	TEI2 2" (INSIDE)

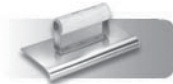


JOINTER

Kraft Tool

Precision forged harden tempered heavy-duty steel jointers. Hand polished.

ITEM # 160190	1/2 X 5/8
# 160193	5/8 X 3/4
# 160196	7/8 X 1



Concrete Stainless Steel Edger

Kraft Tools

Large selection of concrete edger's in stock! Variety of sizes and styles available. Please call for more information.

SPECIALTY TOOLS



"HOT SPOTTER" PROPANE TORCH INCLUDES 6' HOSE SELF LIGHTING

ITEM # 169158

ARTCRETE ROLLER FRAME W/SLATE SLEEVE

Artcrete

INNOVATIVE ROLLER TECHNOLOGY GIVES DECORATIVE CONCRETE CONTRACTORS A WIDE RANGE OF TEXTURES.

Artcrete has developed a line of texture tools (patent pending) that use interchangeable texture sleeves. The interchangeable sleeves come in two sizes, 22-1/2 inches and 6 inches, and allow contractors to offer additional textures for minimal additional cost. The frame handle protrudes from only one end allowing the application of texture against walls.

ITEM # 334263	LARGE
# 334264	SMALL



MISCELLANEOUS TOOLS

www.stetsonbuildingproducts.com



MEGASCREED KIT MSKT FOR #4 REBAR

Landre Corporation

Our MegaScreed Kit includes 1 driver, 200 yokes, and 1 bag.

MegaScreed Specially designed for large concrete finishing operations and heavy-duty industrial finishing equipment. MegaScreed is up to several times faster than conventional methods and offers extraordinary convenience and economy.

ITEM	# 322068	KIT
	# 322070	MEGASCREED YOKES (100/BAG)



MAR180D 6"X3" STAINLESS GROVER 1/2"X1/2" GROVE DURA SOFT HANDLE

- Blade made of stainless steel
- Has a sturdy steel mounting
- Properly shaped bit and leading edge cuts a sharp groove
- Resilient DuraSoft(r) handle provides a soft feel, reduces fatigue, and offers excellent durability
- Cuts 1/2" X 1/2" groove

ITEM # 161103

TUCK POINTER JOINT FILLER

Marshalltown Trowel

- Forged in one piece
- Tapered for the required sturdiness and correct flexibility
- High shank and high lift give plenty of hand room
- Hard wood handle with metal ferrule is securely attached

ITEM	# 161114	MAR503 6-1/2"X1/4"
	# 161116	MAR505 6-3/4"X3/8"
	# 161118	MAR506 6-3/4"X1/2"
	# 161120	MAR507 6-3/4"X5/8"
	# 161122	MAR508 6-3/4"X3/4"

Cedar Rapids, IA (800) 383-7272 • Des Moines, IA (800) 383-2181
Dubuque, IA (800) 894-6272 • Grand Island, NE (800) 228-8572



MAR600 16OZ BRICK HAMMER, 11" HANDLE Marshalltown Trowel

- Forged in one piece from high grade steel
- Perfectly balanced and fitted with a comfortable hickory handle
- Designed for breaking, trimming, and cleaning brick
- Not intended for striking chisels or metal
- WARNING: Always use safety goggles when using brick hammers

ITEM # 161124



BC281 "BIG RED" BRICK TONGS

Kraft Tool

- Non-slip lock down to unload quickly and easily
- Can't damage bricks and is designed and built for long wear.
- Wing nut makes for fast adjustment from 7 to 11 bricks
- Made of malleable iron with smooth wood handle
- A favorite with brick masons across the country.

ITEM # 318000



KUMALONG/SCREED

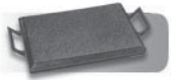
Kraft Tool

- Choice of aluminum or steel blades
- Fitted with 54" wood jam, 60" shovel type wood or 60" snap button aluminum handle
- Braces available for extra strength
- Blade width of 19-1/2", 20", 24" or 30"
- Lightweight magnesium screeds are built for strength and rigidity

A VARIETY OF SIZES AND TYPES OF SCREEDS AVAILABLE AND IN STOCK. PLEASE CALL FOR MORE INFORMATION.

MISCELLANEOUS TOOLS

www.stetsonbuildingproducts.com



CC150 31"X8" H.D. KNEE BOARD

Kraft Tool

- Ideal for concrete finishing
- Provides the knees comfortable support and protection...no more sore knees
- A thermoplastic 2" thick rubber cushion securely fastened to a poly-propylene tray for maximum comfort and long life
- Weighs only 2 lbs.
- Washable and chemical resistant

ITEM # 318152



Hand Edgers

Kraft Tool

- Rivet Free Blade
- Choice of blue steel or stainless steel blades

ITEM # 318354 CF123 6"X2-1/2" 1/2"R OUTSIDE STEP TOOL, STAINLESS
318356 CF124 6"X2-1/2" 1/2"R INSIDE STEP TOOL, STAINLESS



FLUTED RUB BRICK

Kraft Tool

- Fluted silicon carbide rub brick
- Contoured handle to minimize fatigue
- Preferred by finishers for fast and easy concrete smoothing and dressing down
- Choice of 20 or 60 grit
- Available with or without handle

ITEM # 318460 CF268 20GRIT 8"X3-1/2"X1-1/2" WITH HANDLE
318468 CF283 20GRIT FLUTED RUB BRICK 6"X3"X1" WITH HANDLE

Cedar Rapids, IA (800) 383-7272 • Des Moines, IA (800) 383-2181
Dubuque, IA (800) 894-6272 • Grand Island, NE (800) 228-8572



6"X4-1/2" LARGE BIT BRONZE GROOVER

Kraft Tool

- Smooth belt polished surface, makes it perfect for cutting sharp, clean grooves
- Long wearing with features the professional craftsmen demand
- Available in (13) different bit sizes

VARIETY OF BIT GROOVERS AVAILABLE AND A VARIETY OF BIT SIZES.



DC310 5" JIFFLER MIXER 2 WHEEL, 3/8"X24" SHAFT

Kraft Tool

- Two 2-1/2" steel mixing wheels
- 1/4" x 11" steel shaft
- 3-sided non-slip chuck shaft
- For use with 1/4" drill or larger with portable or stationary power over 1800 R.P.M. in a 4 to 10 qt. container
- Easy to use and clean

ITEM # 318524



GG309 WIRE REEL FOR TIE WIRE

Kraft Tool

Made of strong lightweight aluminum. Will not chip, crack, or break. Easy turn handle. Fits any standard belt.

ITEM # 318558



GG325 WIRE TWISTER

Kraft Tool

Two or three pulls of the handle turns the hook within its socket, twisting the wire. Designed for rough treatment. Rubber coated 12" ribbed handle for firm grip.

ITEM # 318569

MISCELLANEOUS TOOLS

www.stetsonbuildingproducts.com



GG463 12 QT HEAVY DUTY FORTEX PAIL

Kraft Tool

These popular fortex black rubber pails won't rust, dent, leak, or chip. Heat or cold, acids, alkalis and most other chemicals don't affect them..

ITEM # 318590



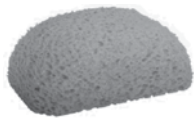
GG725 REBAR CUTTER - BENDER

Kraft Tool

Cuts and bends rebar up to 5/8" diameter all in one tool. Made of cast iron construction and shipped mounted on wood board. 66" x 7 1/2". Weight: 70 lbs.

ITEM # 318592

SPONGES



PL600 TURTLE BACK SPONGE

Kraft Tool

Durable cellulose sponge. Keeps its shape to always fit your hand. Hold water exceptionally well, washed clean. Won't fall apart as quickly as most sponges.

ITEM # 318636



TL475 TILE GROUT SPONGE 7-1/2"X5-1/4"X2-1/4"

Kraft Tool

Large water holding capacity. Soft to prevent digging or marring of grout.

ITEM # 318661