



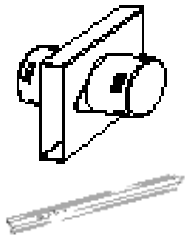
90 DEGREE CORNER (18 PER BOX)

ITEM # 000904 4"
000912 6"

OUTLET TILE ADAPTOR FOR FORM-A-DRAIN

Eliminate the need, cost, and time of going back to the jobsite to remove, strip, clean, and transport forms for reuse. Join the evolution in advanced footing construction; never go back to obsolete methods.

ITEM # 000913



FORM-A-DRAIN DOUBLE OUTLET

ITEM # 000918

18" STAKE FORM-A-DRAIN (100 PER BOX)

ITEM # 001906

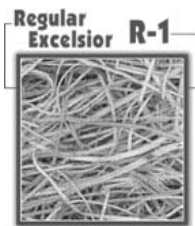
GEOTEXTILE FABRICS/EROSION CONTROL

36" X 100' SILT FENCE W/WOOD STAKES 8' O.C.



A silt fence is made of a filter fabric that has been entrenched, attached to supporting poles, and sometimes backed by a plastic or wire mesh for support. The silt fence detains sediment-laden water, promoting sedimentation behind the fence.

ITEM # 251055



EXCELSIOR MAT DOUBLE NETTED 4'X180', 80SY/RL IA&IL APPROVED

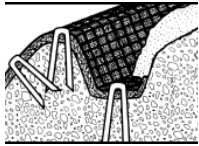
Western Excelsior

Make sure the blanket is in contact with the soil over the entire area, and secured with staples. Normally, it is not necessary to overlap, dig check slots, anchor ditches or bury ends of the blanket when using XCEL Temporary ECB's. It may be necessary to dig check slots, anchor ditches or bury the end of the blanket on long slopes or high flow channel conditions.

ITEM # 251080

EROSION CONTROL/ TRENCH/DRAIN PRODUCTS

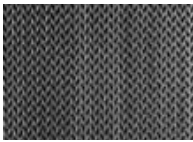
www.stetsonbuildingproducts.com



EXCELSIOR MAT STAPLES **11 GAUGE 6"X2"X6"**

Western Excelsior

ITEM # 251090



#401/451 NONWOVEN GEOTEXTILE 15'X360' 600 SY/RL

Synthetic Industries

GEOTEX 401 is a polypropylene, staple fiber; needle punched non-woven geotextile manufactured at one of SI Geosolutions' facilities that has achieved ISO-9002 certification for its systematic approach to quality. The fibers are needled to form a stable network that retains dimensional stability relative to each other. The geotextile is resistant to ultraviolet degradation and to biological and chemical environments normally found in soils.

ITEM # 251305

PIECE STOCK MAY ALSO BE AVAILABLE. PLEASE CALL FOR MORE INFORMATION.



#351 NONWOVEN GEOTEXTILE

Iowa DOT Approved

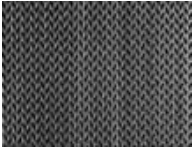
Synthetic Industries

GEOTEX 351 is a polypropylene, staple fiber, needle punched non-woven geotextile manufactured at one of SI Geosolutions' facilities that has achieved ISO-9002 certification for its systematic approach to quality. The fibers are needled to form a stable network that retains dimensional stability relative to each other. The geotextile is resistant to ultraviolet degradation and to biological and chemical environments normally found in soils.

3 oz. material

ITEM # 251307	15'X300'	500 SY/RL
# 251323	12'5" X 360'	500 SY/RL
# 251308	15'X360'	600 SY/RL

PIECE STOCK MAY ALSO BE AVAILABLE. PLEASE CALL FOR MORE INFORMATION.



#601/651 NONWOVEN GEOTEXTILE

Synthetic Industries

GEOTEX 601 is a polypropylene, staple fiber, needle punched non-woven geotextile manufactured at one of SI Geosolutions' facilities that has achieved ISO-9002 certification for its systematic approach to quality. The fibers are needed to form a stable network that retains dimensional stability relative to each other. The geotextile is resistant to ultraviolet degradation and to biological and chemical environments normally found in soils.

5 oz. material

ITEM	# 251310	15' X300'	500 SY
	# 251330	2' X 300'	66.6 SY/RL

PIECE STOCK MAY ALSO BE AVAILABLE. PLEASE CALL FOR MORE INFORMATION.



#381 GEOTEXTILE PAVING FABRIC (500 SY/RL)

Synthetic Industries

PAVE-DRY® 381 is a polypropylene, staple fiber, needle punched non-woven geotextile manufactured at one of SI Geosolutions facilities that has achieved ISO-9002 certification for its systematic approach to quality. The fibers are needed to form a stable network that retains dimensional stability relative to each other. The geotextile is resistant to ultraviolet degradation, calendared on one side, making it ideal for pavement overlay applications.

ITEM	# 251312	12'5"X360'
	# 251324	3'X600'

#801 NONWOVEN GEOTEXTILE, 15'X300',500 SY/RL

Synthetic Industries

GEOTEX 801 is a polypropylene, staple fiber, needle punched non-woven geotextile manufactured at one of SI Geosolutions' facilities that has achieved ISO-9002 certification for its systematic approach to quality. The fibers are needed to form a stable network that retains dimensional stability relative to each other. The geotextile is resistant to ultraviolet degradation and to biological and chemical environments normally found in soils.

6.5 oz. material

ITEM # 251315

PIECE STOCK MAY ALSO BE AVAILABLE. PLEASE CALL FOR MORE INFORMATION.

EROSION CONTROL/ TRENCH/DRAIN PRODUCTS

www.stetsonbuildingproducts.com



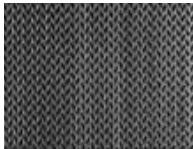
#1201 NONWOVEN GEOTEXTILE, 15'X300', 500 SY/RL

Synthetic Industries

GEOTEX 1201 is a polypropylene, staple fiber, needle punched non-woven geotextile manufactured at one of SI Geosolutions' facilities that has achieved ISO-9002 certification for its systematic approach to quality. The fibers are needed to form a stable network that retains dimensional stability relative to each other. The geotextile is resistant to ultraviolet degradation and to biological and chemical environments normally found in soils.

10.8 oz. material

ITEM # 251317



#200ST WOVEN SILT FILM

Synthetic Industries

GEOTEX 200ST is a woven slit film geotextile manufactured at one of SI Corporations' facilities that has achieved ISO-9002 certification for its systematic approach to quality. The individual slit films are woven together in such a manner as to provide dimensional stability relative to each other. The construction of the geotextile makes GEOTEX 200ST ideal for soil separation and stabilization. The geotextile is resistant to ultraviolet degradation and to biological and chemical environments for normally found in soils.

4.5 oz. material

ITEM # 251350 12'5"X432' 600 SY/RL
251360 17'5" X 309' 600.83 SY/RL



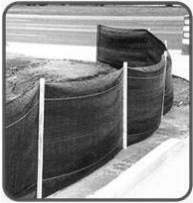
#315ST WOVEN SILT FILM

Synthetic Industries

GEOTEX 315ST is a woven slit film geotextile manufactured at one of SI Corporations' facilities that has achieved ISO-9002 certification for its systematic approach to quality. The individual slit films are woven together in such a manner as to provide dimensional stability relative to each other. The construction of the geotextile makes GEOTEX 315ST ideal for soil separation and stabilization. The geotextile is resistant to ultraviolet degradation and to biological and chemical environments for normally found in soils.

6.5 oz. material

ITEM	# 251365	12'5"X360'	500 SY/RL
	# 251375	17'5"X258'	500SY/RL



914DSC/ECZ067 IA DOT APPROVED SILT FENCE, 3'X300'

Synthetic Industries

GEOTEX 914SC is a woven slit film (warp) and monofilament (fill) geotextile manufactured at one of SI Corporations' facilities that has achieved ISO-9002 certification for its systematic approach to quality. The individual slit films are woven together in such a manner as to provide dimensional stability relative to each other. The construction of the geotextile allows for adequate water flow and soil retention normal to the plane of the geotextile, which makes GEOTEX 914SC ideal for silt fence systems. The geotextile is resistant to ultraviolet degradation and to biological and chemical environments for normally found in soils.

4 oz. material

ITEM	# 251390
------	----------

PLASTIC SAFETY FENCE

SMOOTH TOP DIAMOND FENCE

Conwed Plastics



Conwed plastic fencing combines the best in visibility and versatility to offer you one of the widest selections in the industry. Our fencing has been carefully developed to meet your needs for durable, highly visible temporary barriers.

ITEM	# 155315	4'X100' FENCE
------	----------	---------------